



Transforming Outcomes With Long-Acting Ocular Drug-Delivery

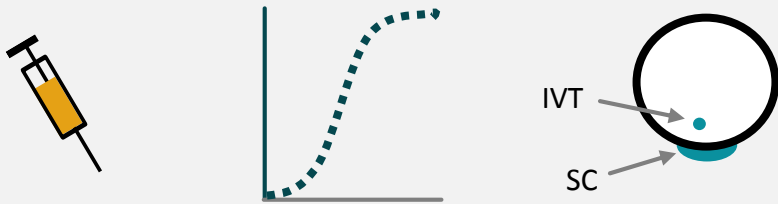
Fred Guerard, CEO

July 2019

Graybug Vision Highlights

Clinical Stage Biopharmaceutical Focused on Long-Acting Delivery

- **Injection with small gauge needle**
 - No surgical procedure
- **Tunable approach**
 - Controlled release and duration
- **Potential for multiple injection routes**
- **Robust IP**



Spin-out from **Johns Hopkins Wilmer Eye Institute**
Headquarters - Redwood City, CA
Research Center - Baltimore, MD

Pipeline Addresses Unmet Needs and Large Market Segments

- **GB-102 - pan-VEGF inhibitor**
 - *Twice* per year
- **GB-103 - pan-VEGF inhibitor**
 - *Once* per year
- **GB-401 - Glaucoma**
 - *2 to 3x* per year
- **Add'l pipeline candidates identified**

DEERFIELD



OrbiMed
Healthcare Fund Management

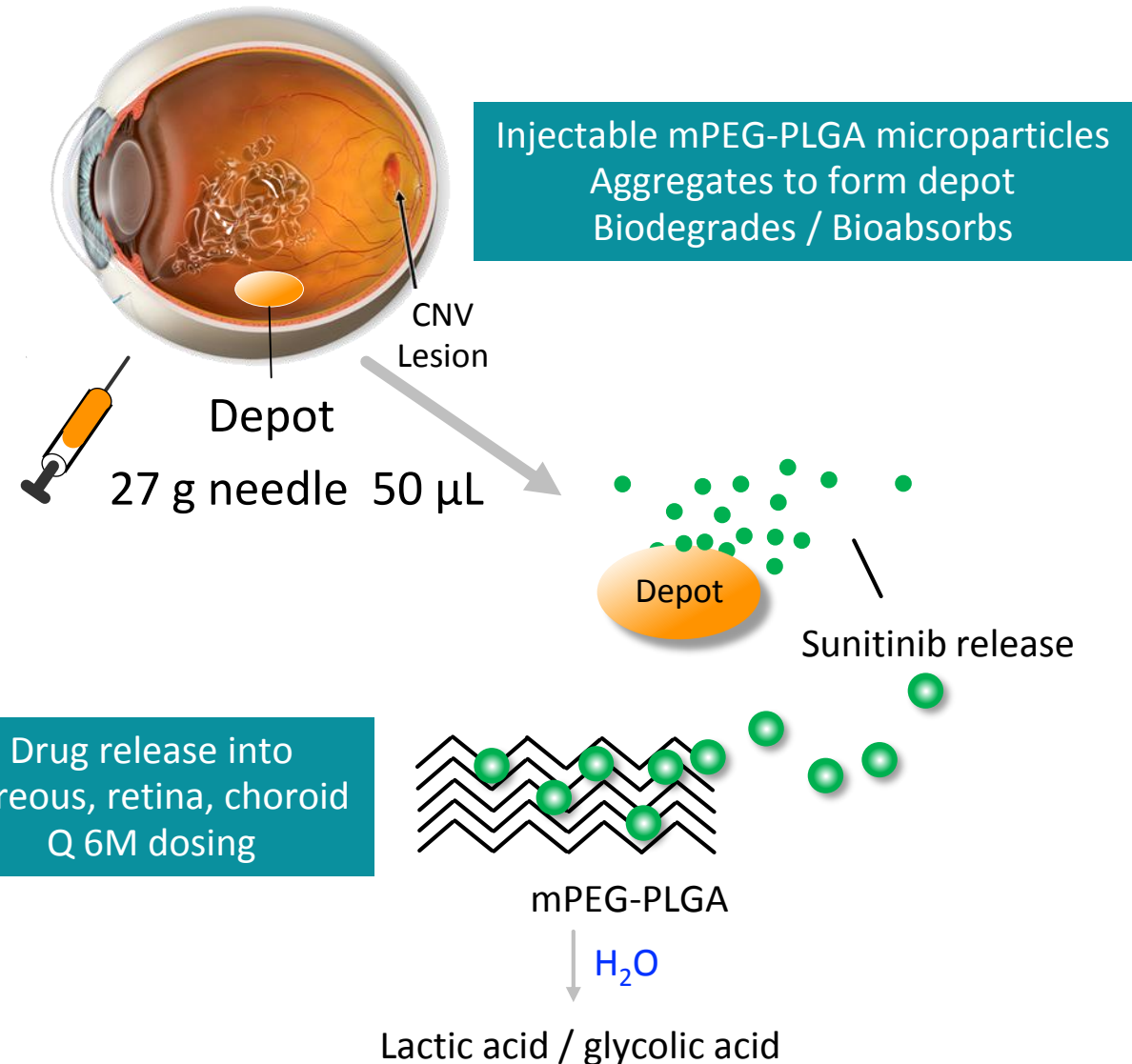
Blackstone

HATTERAS
VENTURE PARTNERS

GB-102: Depot of PEGylated PLGA Microparticles Containing Sunitinib

Three Graybug Proprietary Breakthrough Innovations

1. Inflammation-eliminating mPEG coating ✓
2. Particle aggregation technology ✓
3. Strong preclinical CNV-inhibition with sunitinib ✓



Optimized formulation presentation and depot formation

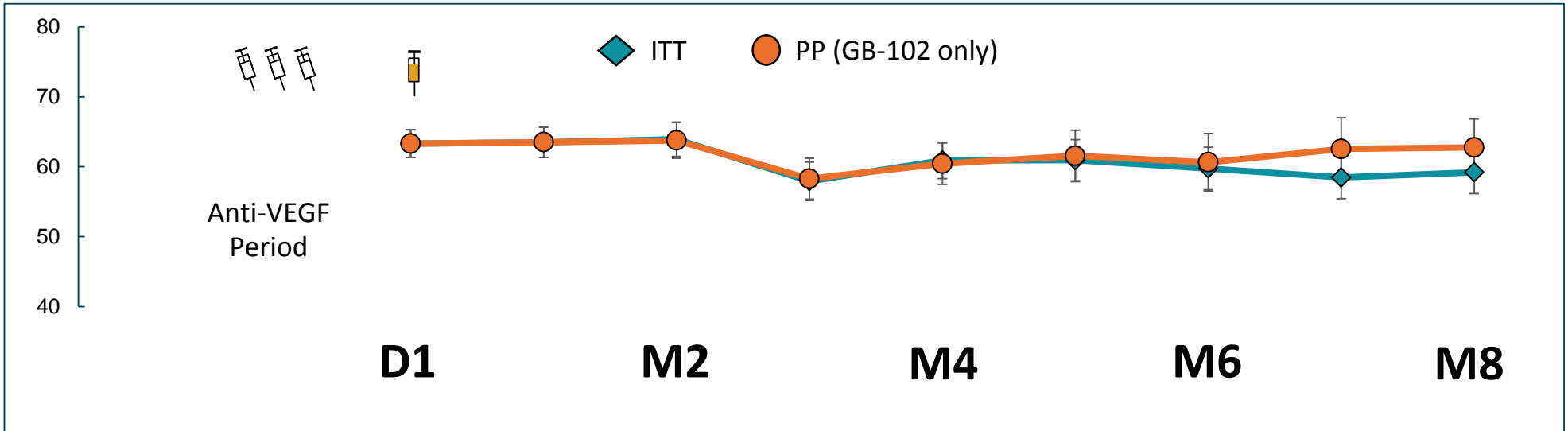


Rabbit eye

Ph 1/2a in wAMD: Maintenance of Vision and Macular Stability with single injection of GB-102 over 8 months

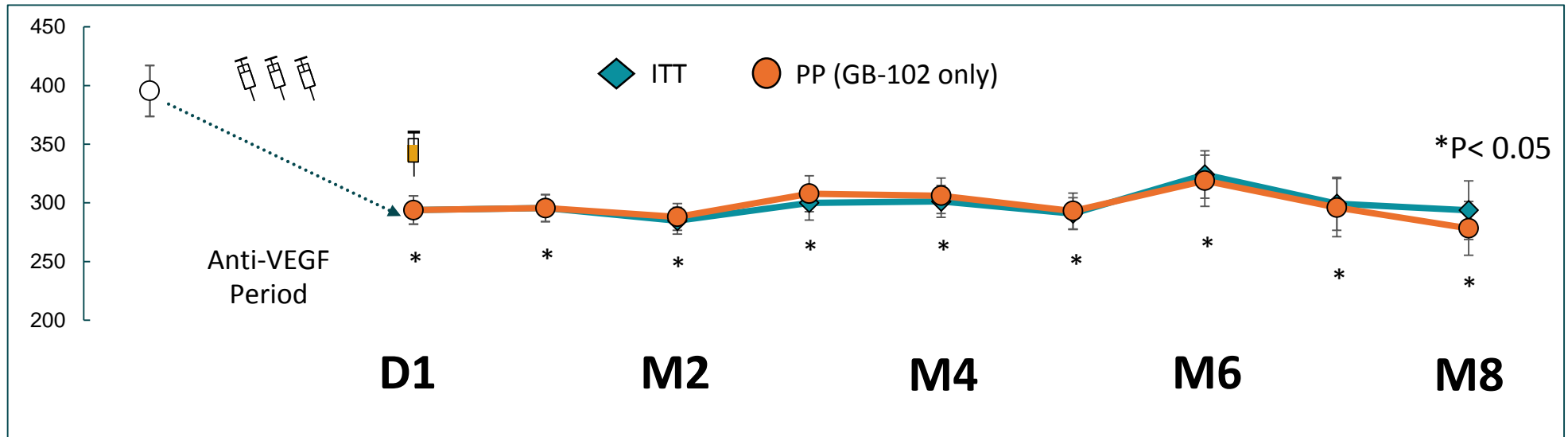
Mean BCVA

All Cohorts
N=32

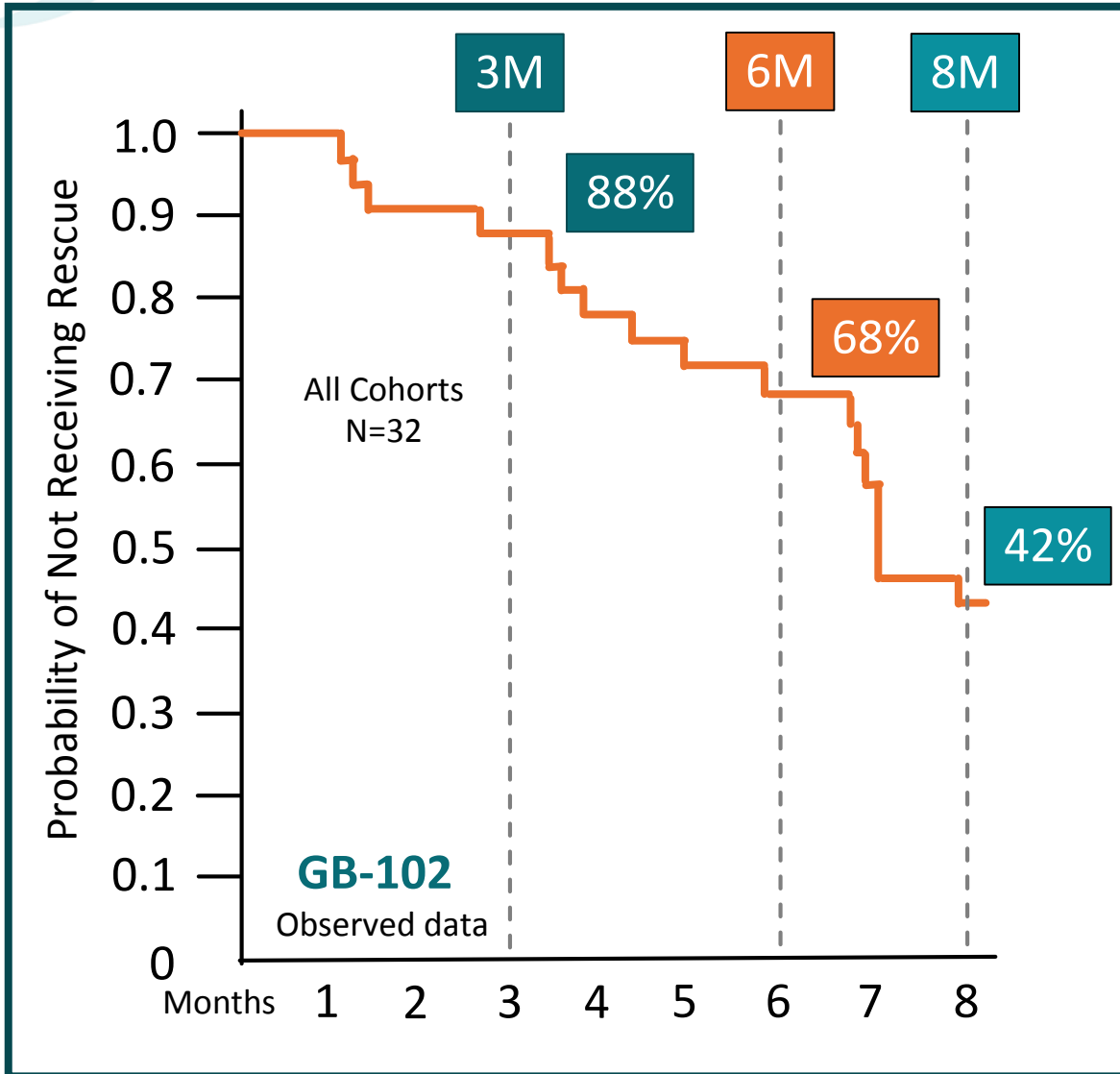


Mean CST

All Cohorts
N=32



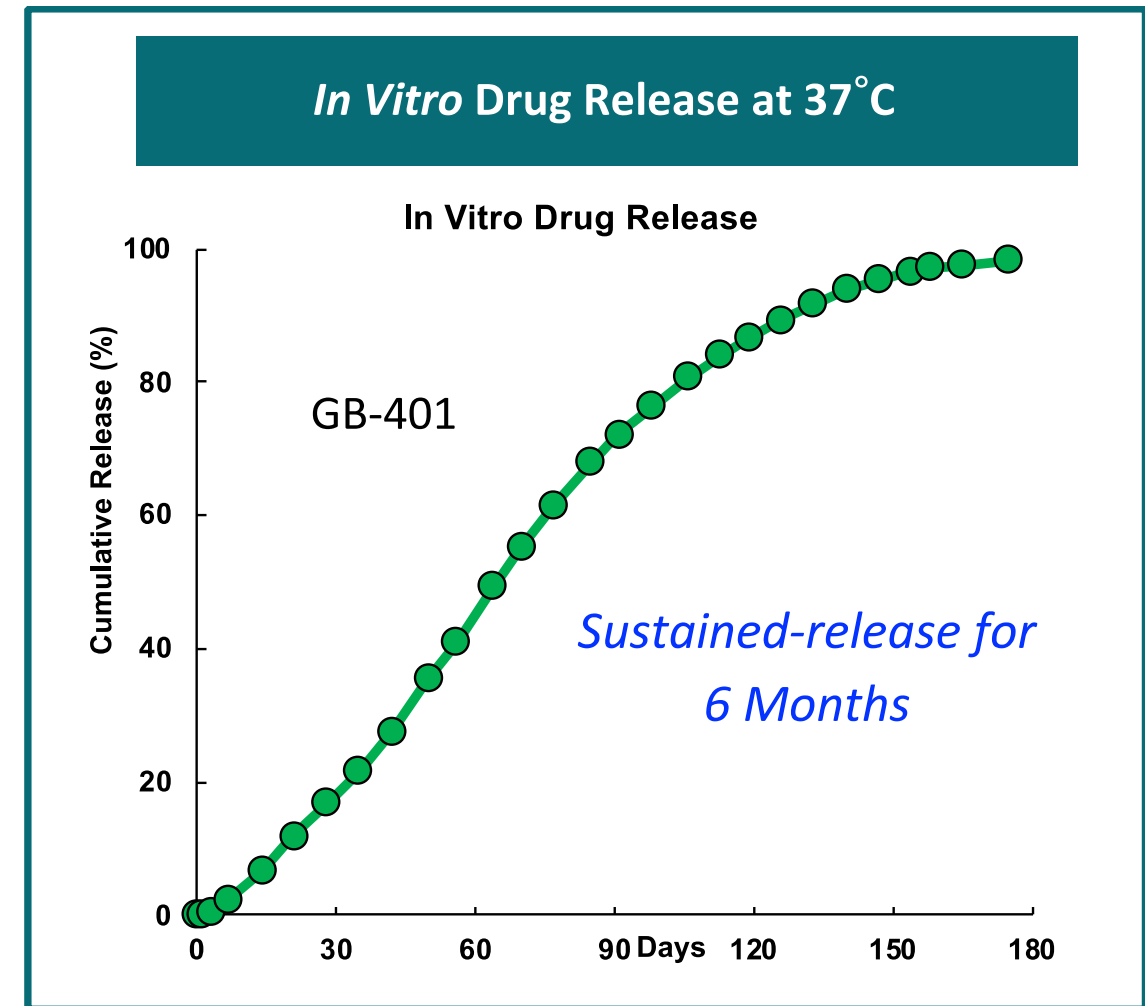
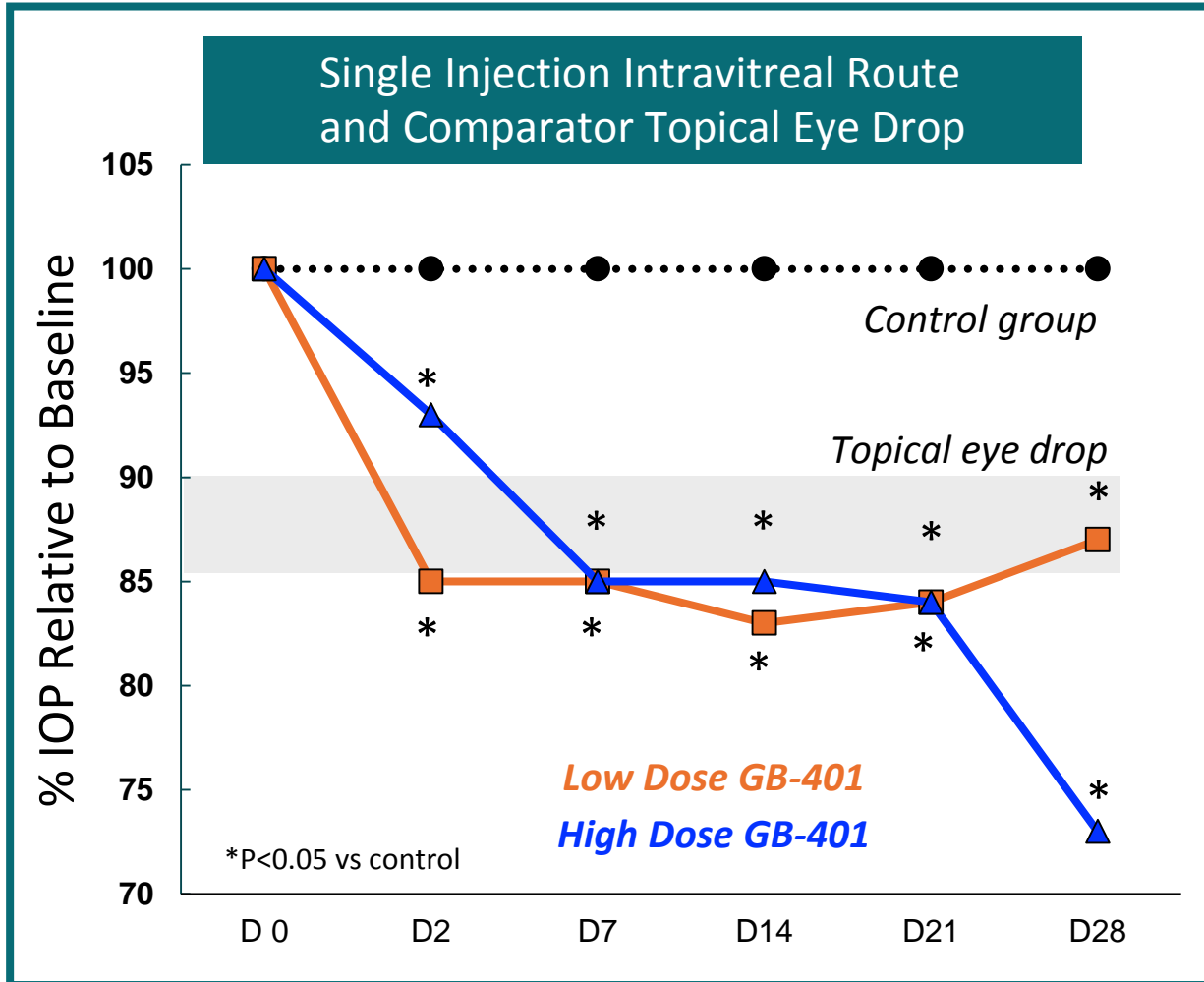
Phase 1/2a - High Overall Rescue-Free Rates Observed with GB-102



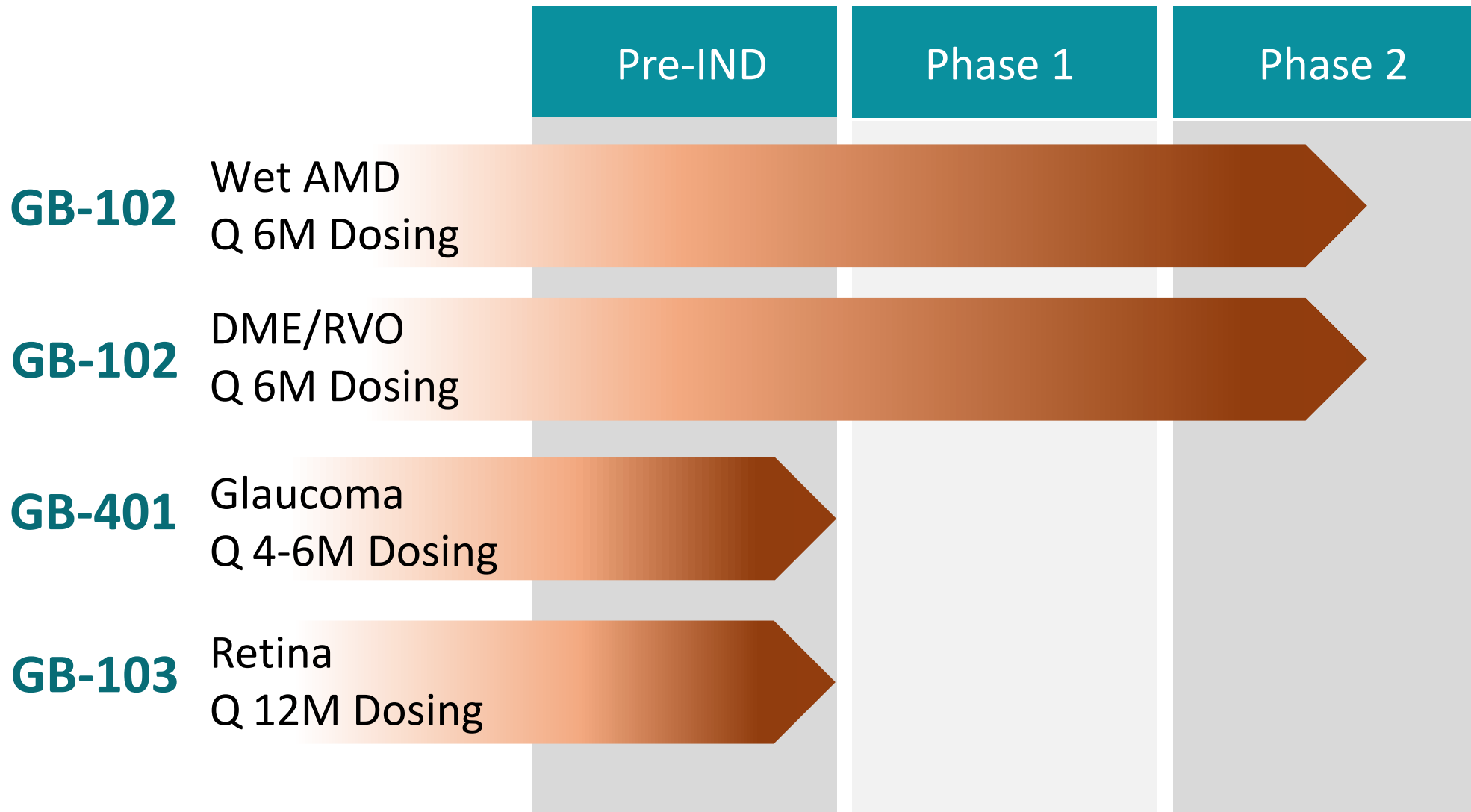
- Rescue-Free Rates ranging from 50% to 88% at 6 Months
- Excellent safety profile
- Phase 2a study in Macular Edema to start in Q3 2019
- Phase 2b in wAMD will start in Q3 2019

GB-401 (NME) for Glaucoma: Sustained Reduction of Intraocular Pressure from Single IVT Injection

Proof of Concept in OHT Rat Model



Pipeline



Thank You!

